

## A1303 High Speed CAENET PCI Controller T20

The Mod. A1303 is a 32-bit 33 MHz PCI card, which allows the control of a HS CAENET network through a standard PC. The communication path uses a simple 50 Ohm coaxial cable as its physical transmission line. The card drivers, together with C functions libraries, demo programs and diagnostic utilities are provided for both Windows and Linux Users.



### Ordering Information

Code	Description
WA1303XAAAAA	A1303 - High Speed CAENET PC Controller (PCI Bus)

## A2818 PCI CONet Controller

The Mod. A2818 is a 32-bit 33 MHz PCI card, which allows the control, through a standard PC, of the CONet (the network of up to eight daisy chained V2718/VX2718 VME-PCI bridges or CAEN Waveform Digitizers).

The communication path uses optical fiber cables as physical transmission line (AY2705, AY2720, AI2705, AI2720). The card drivers, together with C/LabView functions libraries and Demo programs are provided for both Windows and Linux Users.



### Ordering Information

Code	Description
WA2818XAAAAA	A2818 - PCI Optical Link Controller
WAI2703XAAAA	AI2703 - Optical Fibre 30 cm. simplex
WAI2705XAAAA	AI2705 - Optical Fibre 5 m. simplex
WAI2720XAAAA	AI2720 - Optical Fibre 20 m. simplex
WAY2705XAAAA	AY2705 - Optical Fibre 5 m. duplex
WAY2720XAAAA	AY2720 - Optical Fibre 20 m. duplex

## A3818 PCI Express CONET2 Controller

The Mod. A3818 is a PCI Express card that can plug into any x8/x16 PC PCI Express slot (1.1 or higher), which allows the control up to 4 CONET2 independent networks (each network can be made of up to 8 CONET2 slaves).

The communication path uses optical fiber cables as physical transmission line (AY2705, AY2720, AI2705, AI2720).



## A385 - A392 16 Channel LEMO Adapters

The Mod. A385 and A392 allows to provide respectively the V785 and the V792, with LEMO 00 input connectors, adapting them to the flat connectors. The models A385 and A392 fit into one 17+17 pin male flat type connector and are provided with 16 LEMO 00 male connectors each. The Mod. A385 can also be used to match the output flat connectors of the Mod. N568B/LC Spectroscopy Amplifier with the LEMO input connectors of a discriminator (such as V812, V895 etc.). The devices are completely passive mechanical adapters for analog signals and feature 50 cm long cables.



### Ordering Information

Code	Description
WA385XAAAAA	A385 - 16 Channel Cable Adapter (Flat to LEMO) for V785, 50cm ±10% cables
WA392XAAAAA	A392 - 16 Channel Cable Adapter (Flat to LEMO) for V792, 50cm ±10% cables
WA385XMAAAAA	A385M - 16 Channel Cable Adapter (Flat to LEMO) for V785, 1m ±10% cables
WA392XMAAAAA	A392M - 16 Channel Cable Adapter (Flat to LEMO) for V792, 1m ±10% cables

## A654 MCX to LEMO Cable Adapters

The Mod. A654 adapter allows to adapt the MCX input connectors (used on CAEN Waveform digitizers) into LEMO 00 connectors. CAEN provides kits with 1, 4, 8 cable adapters



### Ordering Information

Code	Description
WA654XAAAAA	A654 - Single Channel MCX to LEMO Cable Adapter
WA654K4AAAAA	A654 KIT4 - 4 MCX TO LEMO Cable Adapter
WA654K8AAAAA	A654 KIT8 - 8 MCX TO LEMO Cable Adapter

## A746A 32ch Adapter for 100x100mils head connector

The Mod. A746A allows to adapt one ERNI SMC-114805 high density flat connector (used on V1740 and VX1740) into two 17+17-pin Header-type female connectors with locks.



## A746B 64ch Adapter for LEMO connector

The Mod. A746B allows to adapt one ERNI SMC-114805 high density flat connector (used on V1740 and VX1740) into 64 LEMO connectors.



### Ordering Information

Code	Description
WA746BXAAAAA	A746B - 64 Ch. Adapter for LEMO connector

### A954 16 Channel to 2x8 Channel Cable Adapter

The Mod. A954 allows to adapt one 17+17-pin, female Header-type connector (16 pin couples connected) into two 8+8-pin, female Header-type connectors, through one splitted 50cm long flat cable (split lenght is 20cm). It can be used on all CAEN modules featuring the 3M 3431 Connector.



#### Ordering Information

Code	Description
WA954XAAAAA	A954 - 16 Channel to 2x8 Channel Cable Adapter

### A967 32 Channel Cable Adapter for V767, V862, V1190, VX1190, V1495

The Model A967 allows to adapt one Robinson Nugent high density flat connector (used on V862, V767, V767A, V1190A/B, VX1190A/B and V1495) into two 17+17-pin Header-type male connectors with locks through two 25 cm long flat cables.



#### Ordering Information

Code	Description
WA967XAAAAA	A967 - 32 Channel Cable Adapter (1x32 to 2x16) for V767, V862, V1190, VX1190, V1495

### A992 16 Channel Impedance Adapter

The Mod. A992 is a plug-in card, provided with 16 independent input channels on a 34 pin male header connector, to be inserted into the Mod. V792 QDC's front panel connectors (one V792 requires two A992 adapters). The card matches the QDC's input impedance from 50 Ohm to 110 Ohm, decouples the QDC's and the source's ground and converts differential signals into single ended signals.



#### Ordering Information

Code	Description
WA992XAAAAA	A992 - 16 Channel Impedance Adapter for V792

### N1568ADAT USB RS485 Adapter Board

The N1568ADAT converts from USB to RS-485. The converter allows use the modules with laptop computers that do not have a serial port. The device is provided with drivers and installation instructions supporting the most used OS's.



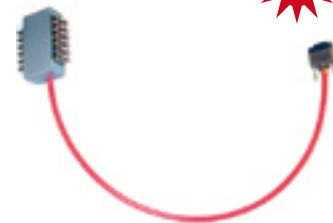
#### Ordering Information

Code	Description
WN1568ADATXX	N1568 - USB-RS485 Adapter

### A647 24 Channel Radiall to SHV Adapter



The A647 Radiall to SHV Adapter allows to adapt one Radiall 691803004 type Multipin connector of the A1535 24 Channel 3.5 kV/3 mA Common Floating Return Board, into 24 Radiall SHVR317580-type HV coaxial connectors.



#### Ordering Information

Code	Description
WA647XAAAAA	A647 - A1535 Radiall to SHV Cable Adapter

### A648 48 Channel Radiall to SHV Adapter



The A648 Radiall to SHV Adapter allows to adapt one Radiall 691803004 type Multipin connector of the A1932A 48 Channel 3 kV Distributor Board, into 48 Radiall SHVR317580-type HV coaxial connectors.

#### Ordering Information

Code	Description
WA648XAAAAA	A648 - A1932 Radiall to SHV Cable Adapter

### A995 Insertion/extraction tool for A996

The CAEN Mod. A995 Insertion/Extraction Tool allows to either insert or remove the pin contacts from the connector Mod. A996 52 Pin HV cable connector designed to be used with the CAEN boards featuring the Multipin connector Radiall 691803004 type. The A995 has one "half-tube" needle on one side for contact insertion and one "tube" needle on the opposite side for contact extraction.



#### Ordering Information

Code	Description
WA995XAAAAA	A995 - Insertion/extraction tool Radiall 282549024 for A996

### A996 52 pin cable connector

The CAEN Mod. A996 is the 52 Pin HV cable connector designed to be used with the CAEN boards featuring the Multipin connector Radiall 691803004 type. The connector must be assembled by using the CAEN Mod. A995 Insertion/Extraction Tool, which allows to either insert or remove the pin contacts from the connector.



#### Ordering Information

Code	Description
WA996XAAAAA	A996 - 52 pin cable connector for A173XB-A183XB-A1932A-A1535

## A997 HV coaxial cable connector for A1526

The CAEN Mod. A997 is the female cable connector to be mated with the CPE 23.100.151-046 type male panel connector of the Mod. A1526 6 Ch 15 kV Common Floating Return HV Board.



### Ordering Information

Code	Description
WA997XAAAAAA	A997 - H.V. coaxial cable connector for A1526

## A309 - A310 - A311 - A312 - A313 Single Channel Fixed Attenuators

The Mod. A309, A310, A311, A312 and A313 are simple devices that provide a fixed attenuation (1, 3, 6, 12 and 20 dB respectively). The attenuators are 50 Ohm adapted and feature LEMO female type connectors; they do not require any power supply since they are made up of resistive cells.



### Ordering Information

Code	Description
WA309XAAAAAA	A309 - Single Channel Fixed Attenuator (1dB)
WA310XAAAAAA	A310 - Single Channel Fixed Attenuator (3dB)
WA311XAAAAAA	A311 - Single Channel Fixed Attenuator (6dB)
WA312XAAAAAA	A312 - Single Channel Fixed Attenuator (12dB)
WA313XAAAAAA	A313 - Single Channel Fixed Attenuator (20dB)

## A483 HV Bidirectional Passive HV Filter

The Mod. A483 is a bidirectional passive HV filter. The filter has a Maximum Input Voltage of  $\pm 8$  kV. The Ripple Rejection is 20 dB (26 dB @ 36 KHz), measured with 50 mVpp (40 mVpp @ 36 KHz) input ripple, 8 kV Input DC Voltage and 8  $\mu$ A Output Current. It does not require any power supply since it is made up of passive components.



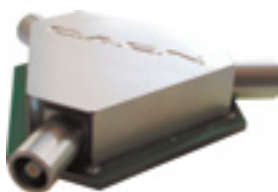
The module is designed to be used together with a HV Power Supply when a low ripple is required (E.G. for Ge-detector applications). The High Voltage input and output are provided by SHV connectors.

### Ordering Information

Code	Description
WA483XAAAAAA	A483 - HV Filter (8KV)

## A315 Splitter

The Mod. A315 splits one input on two output signals. All the connectors are LEMO female type. The splitter is adapted for 50 Ohm lines. The device is completely passive (no power supply is required); the amplitude on each output is one half of that on the input.



### Ordering Information

Code	Description
WA315XAAAAAA	A315 - Splitter